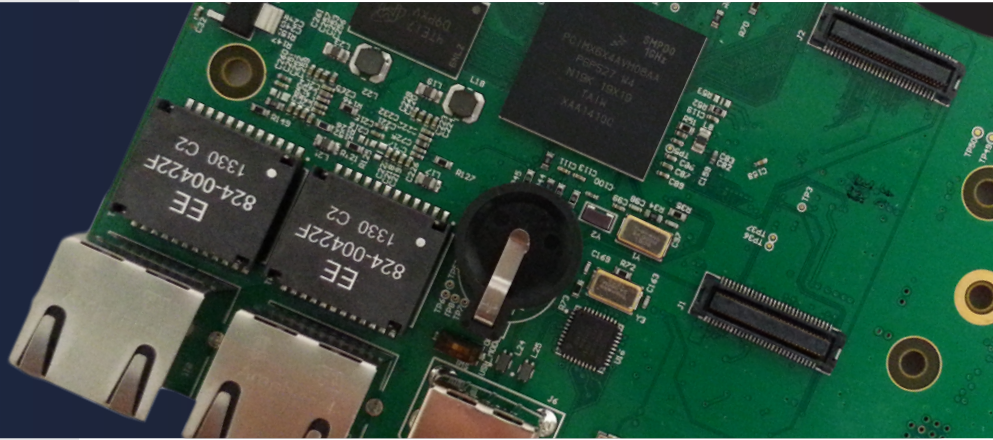
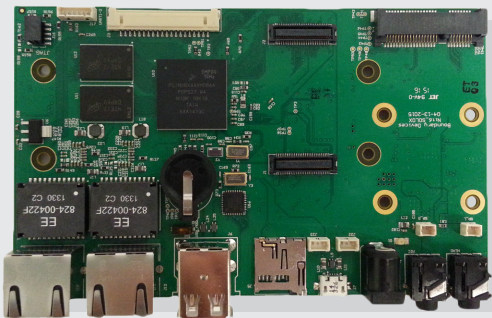


NIT6_SOLOX



PRODUCT DESCRIPTION

The Nit6_SoloX is a multi-purpose i.MX6 single board computer based on the i.MX6 SoloX processor from Freescale. The i.MX6 SoloX processor from Freescale has an ARM Cortex A9 and ARM Cortex M4 cores which provides expanded usability to the i.MX6 family. The Nit6_SoloX was designed to take advantage of the key features of the SoloX processor including Dual Gigabit Ethernet and the M4 core.



MAIN FEATURES

- i.MX 6 SoloX ARM Cortex-A9/ARM Cortex-M4(Cortex-A9 @ 1GHZ, Cortex-M4 @200MHZ)
- 1GBytes of 32-bit wide DDR3 @ 532MHz
- 2MB Serial Flash
- 4GB eMMC (expandable up to 64GB)
- Dual 10/100/1000 Ethernet with Atheros AR8035
- LVDS
- 1 microSD card
- RTC with battery backup
- PCIE + SIM Card Reader
- Analog Audio (Headphone + MIC IN)
- 2W Stereo Amplified 2-Channel Speaker Output
- 10-pin JTAG interface
- USB Double Stack Host + 1 USB OTG
- UART Interface
- Dual CAN Bus
- WiFi+BT (via Daughter board)
- SPI + UART + I2C + GPIO (via Daughter board)
- Analog Camera Input (via Daughter board)
- RGB (via Daughter board)
- ADC (via Daughter board)
- Supports Yocto and Ubuntu Linux
- Industrial Temperature Versions Available
- Custom Versions Available

OS SUPPORT

