

Data Sheet

24W AC-DC Adapter Power Supply



- Universal AC Input 90 – 264 VAC
- Interchangeable AC-Plugs
- Low ripple noise
- No minimum load requirement
- 100% burn in test
- Safety: IECxxxx
- CEC & DOE Efficiency Level VI compliant
- ErP Tier2 compliant
- RoHS compliant



Model Selection Guide:

Typ	Input nominal voltage [VAC]	Input current full-load [mA]	Output voltage [VDC]	Output current Max. [mA]
PSW24E120K0	90 – 264	800	12.0	2000
PSW24E240K0	90 – 264	800	24.0	1000

Specifications:

Input	
Rated Input Voltage	AC 90V – 264V Universal full range
Frequency Rated	50 – 60Hz (47 – 63Hz)
Input Rated Current	Max. 800mA RMS max
Inrush Current @ Cool start	No damage. On power when switching on/off repeatedly under any condition
Leakage Current	0.25mA
Average Efficiency	Min. 86.2% (CEC & DOE Level VI compliant) Min. 86.8% (ErP Tier 2 compliant)
Input Power (no load)	<0.1W (CEC & DOE Level VI compliant) <0.075W (ErP Tier 2 compliant)

Output	
Output Voltage	See model selection guide
Output Current max.	See model selection guide
Line Regulation	±1%
Output Voltage Tolerance	±5%
Over Voltage Protection	Yes (Output shut down and auto restart)
Short Circuit Protection	Yes (Output shut down and auto restart)
Ripple Voltage (Full load)	300mV (p-p) at 100-240VAC and full load

Note: Ripples shall be measured with a 47µF electrolytic capacitor parallel with a high-frequency 0.1µF ceramic capacitor across the output. The oscilloscope's bandwidth shall be set to 20MHz.

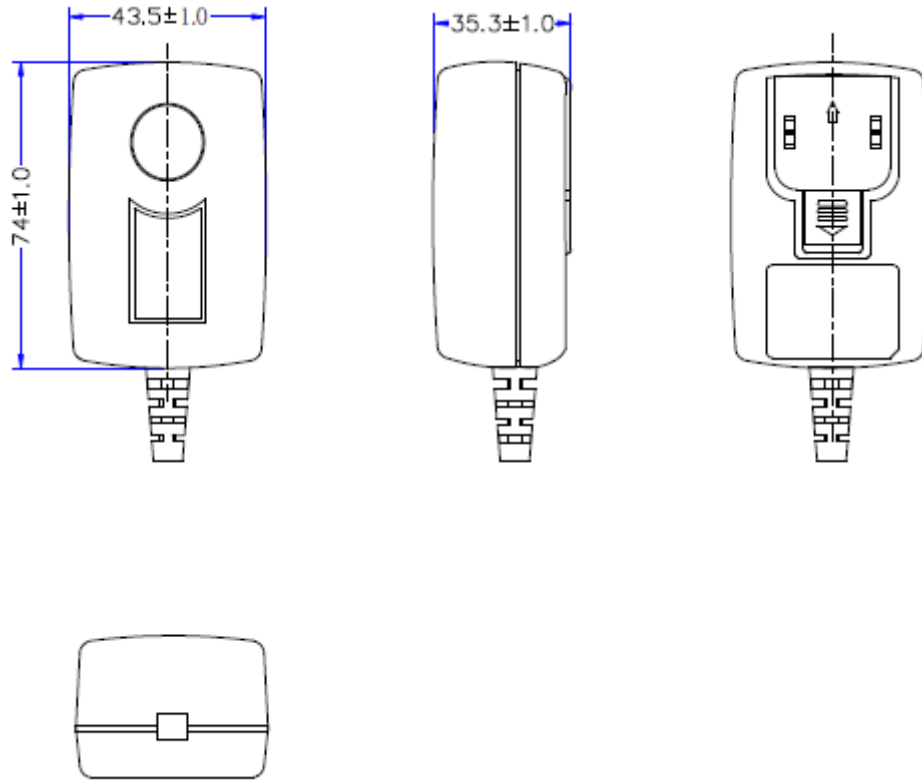
Others	
Insulation Resistance (input to output)	500VDC to test the input to output not be less 100MΩ
Hi-pot Specification (input to output)	3000VAC or 4242VDC (10mA, 1minute)
Cooling	Natural Cooling
RoHS compliant	Yes

Environment	
Temperature	Operating : 0°C to +40°C Storage : -10°C to +70°C
Humidity	Operating : 20% to 80% Storage : 10% to 90%
Packaging	white folding box

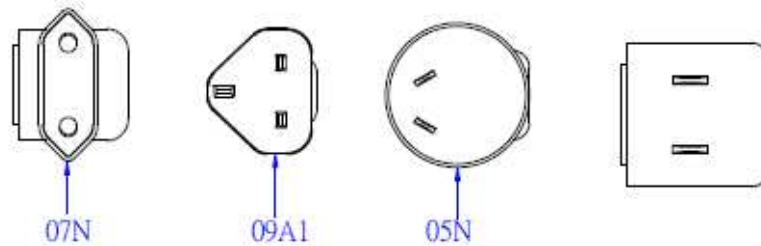
Safety & EMC			
Type (Marking)	Country	Standard	
UL/cUL	USA/Canada		
UL/GS	Germany		
FCC	USA		
CE	Europe	Safety	IEC60950
		EMI	FCC class B

Cable/Connectors	
AC Plug	Interchangeable 4 AC-Plugs (EUR, US, UK, AUS)
DC Plug	DC power plug: OD 5,5mm / ID 2,1mm / L 12mm
DC Cable	2 wire AWG20 (see drawing), 1530 ±100 mm

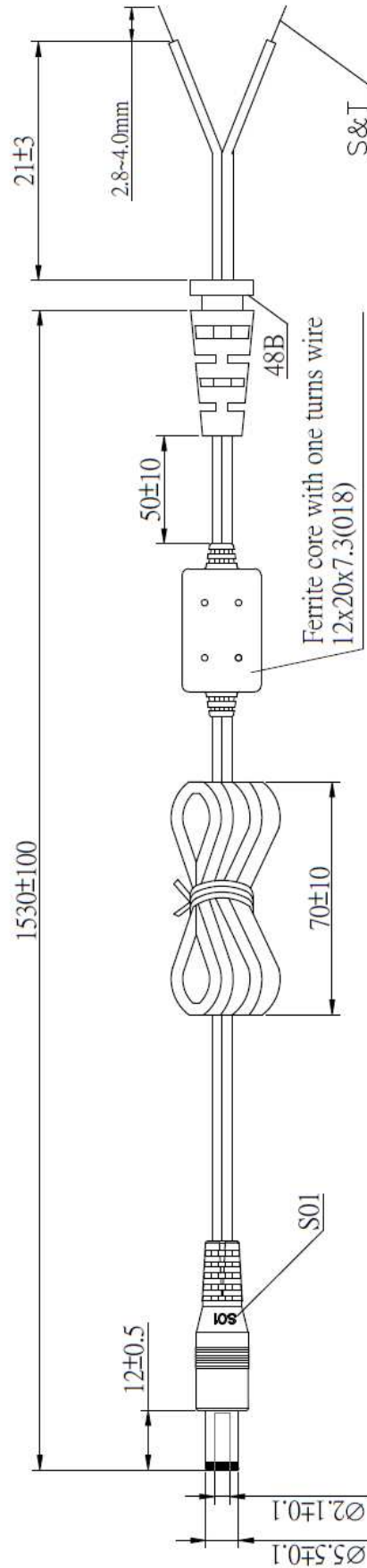
Dimensions:



AC-Plugs (included separately in the package):



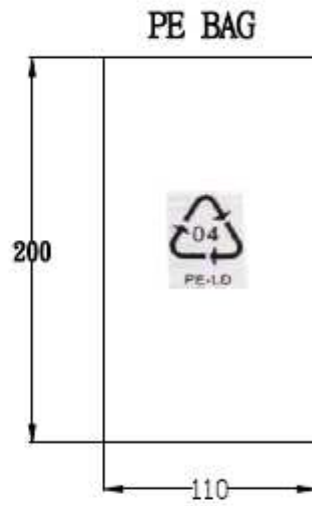
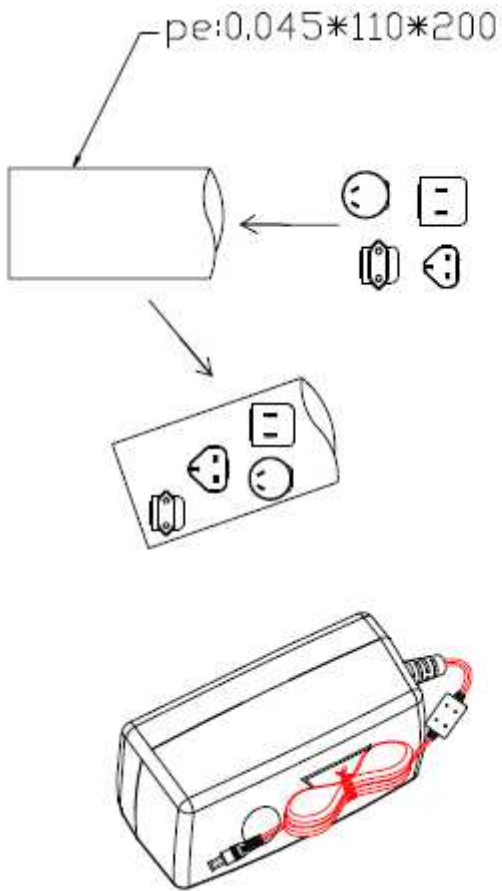
DC cable/connector:



#20AWG X2C UL2468 HAVE ON WORD WIRE IN OUTER, NO WORD WIRE IN INNER(有字接外，無字接內)

Wire OD: $\varnothing 1.9 \times 3.8$

Others/Drawings:



Accessories:

-